

ORDERING INFORMATION



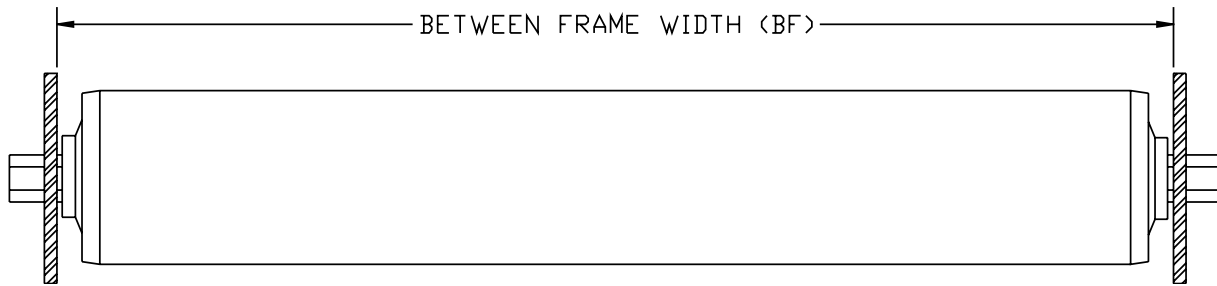
IMPORTANT - To ensure proper fit, the between frame dimension as measured from inside frame to inside frame is required.

As standard Rolcon uses precision bearings and double spring loads the axle. Please specify any deviation from standard.

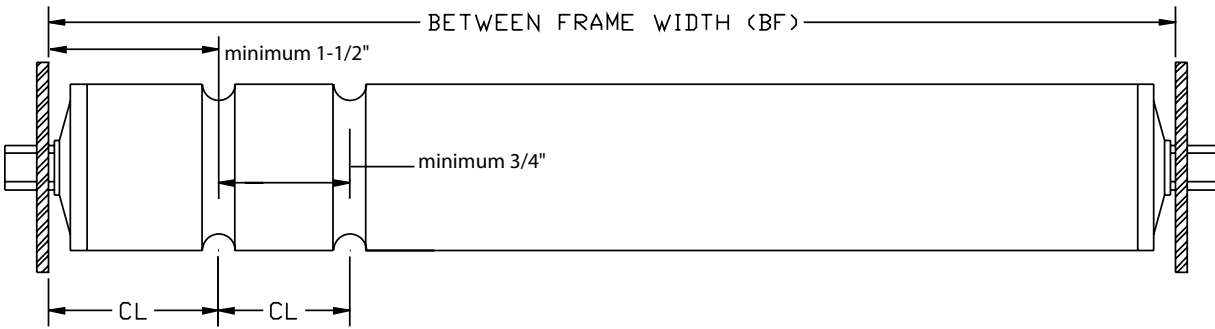
NOTE: Roughly 50% of our business is custom. If you cannot find what you want in the catalog, just fill out the order form and we will be happy to quote your own custom roller.

- | | |
|--|-------------------------------------|
| Between Frame Width _____ | Roller Diameter _____ |
| Wall Thickness (Gauge) _____ | Axle Size _____ |
| Axle Length _____ | Type of Bearing _____ |
| Groove Center Line _____ (if applicable) | Sprocket Size _____ (if applicable) |
| Single Spring Retained _____ | Pin Retained _____ |

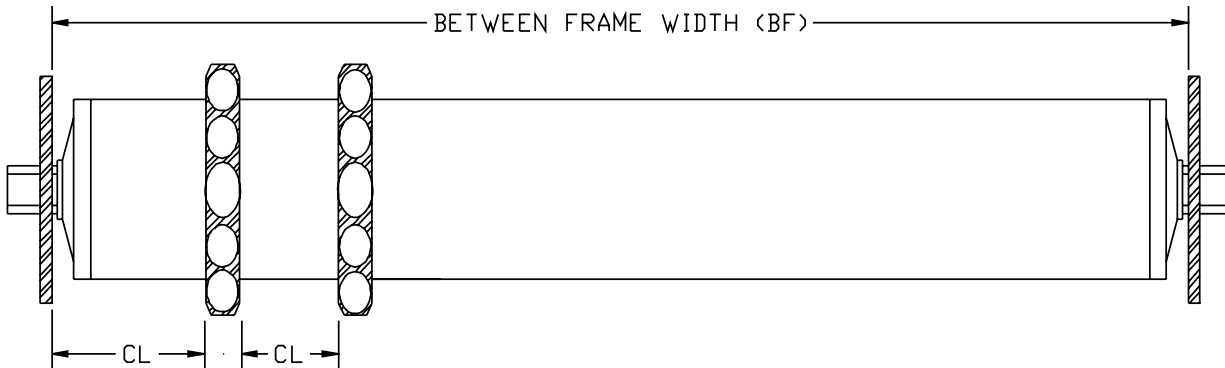
Standard Roller / FS Series Roller



Grooved Roller / FS Series Grooved Roller



Roller with Sprockets



FS Series Rollers (p.3-10) Rollers (p.11-23) Bearings (p.25-31) Gen. Info & Ordering Info (p.32-35)

www.rolconvenix.com

Rolcon Rollers are double spring loaded unless otherwise specified

Orders for CUSTOM SIZED ROLLERS are always accepted.